



# INSTALLATION

## WOLO HORNS for GL 1800

## 7734

### PARTS INCLUDED

- 1 Wolo Loud and Chrome Horn Set
- 1 Wiring and Relay Harness
- 1 Relay
- 1 Hardware Kit Containing
  - 6 6" Black Nylon Cable Ties
  - 1 Dielectric Grease Pack
- 1 Installation Instructions

Please read and understand entire instructions before starting installation.

### THANK YOU FOR CHOOSING KÜRYAKYN!

**IN ORDER TO PROTECT YOU AND OTHERS FROM POSSIBLE INJURY AND/OR PROPERTY DAMAGE OR LOSS, PLEASE PAY CLOSE ATTENTION TO ALL INSTRUCTIONS, WARNINGS, CAUTIONS AND NOTICES REGARDING THE USE AND CARE OF THIS PRODUCT.**

|                |  |
|----------------|--|
| <b>WARNING</b> | <b>THIS INDICATION ALERTS YOU TO THE FACT THAT IGNORING THE CONTENTS DESCRIBED HEREIN CAN RESULT IN POTENTIAL DEATH OR SERIOUS INJURY.</b>             |
| <b>NOTICE</b>  | <b>This indication alerts you to the fact that ignoring the contents described herein may negatively affect product performance and functionality.</b> |
| <b>CAUTION</b> | <b>This indication alerts you to the fact that ignoring the contents described herein can result in potential injury.</b>                              |

**NOTICE**

**IF INSTALLING THIS PRODUCT FOR ANOTHER PARTY, PLEASE MAKE SURE THEY RECEIVE THIS COPY OF THE INSTALLATION INSTRUCTIONS SO THEY ARE AWARE OF THE IMPORTANT INFORMATION CONTAINED IN THEM.**

### TOOLS SUGGESTED

Set of Metric Hex Wrenches, Set of Metric and Standard Combination Wrenches

**STRICTLY OBSERVE THE FOLLOWING GUIDELINES IN ORDER TO USE THE PRODUCT PROPERLY AND AVOID POTENTIALLY DANGEROUS ACCIDENTS.**

**STEP 1** Read and understand all steps in the instructions before starting the installation. Park the motorcycle on a hard, level surface and turn off the ignition. Let cool.

**WARNING**

**YOU WILL BE WORKING AROUND THE ENGINE AND EXHAUST SYSTEM DURING INSTALLATION. ENSURE THAT THE ENGINE AND EXHAUST SYSTEM HAVE FULLY COOLED TO PREVENT INJURY.**

**NOTICE**

**A factory service manual may be helpful in performing this installation. Do not attempt to perform this installation if you are not confident in your ability to complete all of the steps in the procedure; consult a trained technician.**

### CUSTOMER SERVICE

877.370.3604 (toll free)

### INSTALLATION QUESTIONS

techsupport@kuryakyn.com  
or call 715.247.2983

### LIMITED WARRANTY

Kuryakyn warrants that any Kuryakyn products sold hereunder, shall be free of defects in materials and workmanship for a period of one (1) year from the date of purchase by the consumer excepting the following provisions:

- Kuryakyn shall have no obligation in the event the customer is unable to provide a receipt showing the date the customer purchased the product(s).
  - The product must be properly installed, maintained and operated under normal conditions.
  - Kuryakyn makes no warranty, expressed or implied, with respect to any gold plated products.
    - Kuryakyn shall not be liable for any consequential and incidental damages, including labor and paint, resulting from failure of a Kuryakyn product, failure to deliver, delay in delivery, delivery in nonconforming condition, or for any breach of contract or duty between Kuryakyn and a customer.
- Kuryakyn products are often intended for use in specific applications. Kuryakyn makes no warranty if a Kuryakyn product is used in applications other than intended.
- Kuryakyn electrical products are warranted for one (1) year from the date of purchase by the consumer. L.E.D.'S contained in components of Kuryakyn products will be warranted for defects in materials and workmanship for 3 years from the date of purchase where as all other components shall be warranted for one(1) year. This includes, but is not limited to; control modules, wiring, chrome & other components.
  - Kuryakyn makes no warranty of any kind in regard to other manufacturer's products distributed by Kuryakyn. Kuryakyn will pass on all warranties made by the manufacturer and where possible, will expedite the claim on behalf of the customer, but ultimately, responsibility for disposition of the warranty claim lies with the manufacturer.

### ABOUT OUR CATALOG

For purchasing Kuryakyn® products, you can receive a complete catalog free of charge. Send the Proof-of-Purchase below with your address to: Kuryakyn, P.O. Box 339, Somerset, WI 54025. Please indicate either Accessories Catalog for Harley-Davidson® or GL & Metric Cruisers.

Be sure to ask your local dealer about other Kuryakyn® products, the motorcycle parts and accessories designed for riders by riders.

©2005 Kuryakyn USA® All Rights reserved.



kuryakyn.com

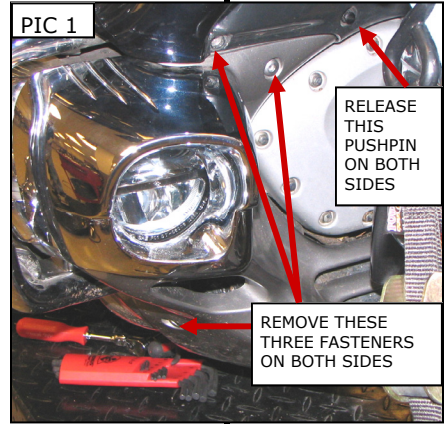


**CAUTION** Avoid potential electrical shock! Disconnect the battery before starting this procedure.



**NOTICE** Avoid damage to the motorcycle. Protect painted surfaces with a soft cloth or blanket.

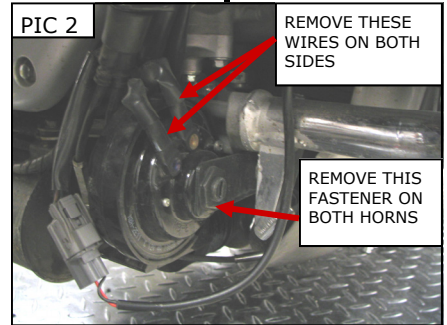
**STEP 2** Remove the six button socket screws (three on each side) that secure the lower cowling to the bike. There will also be two pushpins (one on each side) that will also secure the lower cowling to the upper plastic shroud in front of the engine. PIC 1



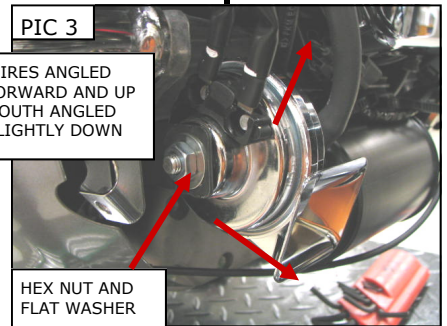
**STEP 3** Remove the lower cowl from the bike. Place the lower cowl face down on a soft surface so you do not damage the finish.

**NOTE:** It may be easier to remove the cowl by moving the handlebars from side to side.

**STEP 4** Unplug the wiring from the stock horns. The new right side (sitting on the bike) Wolo Horn will be connected to the OEM wires from the OEM horn when installed. Remove the OEM horns from the bike by removing the fastener that mounts the horn to the bracket on each side of the bike. PIC 2



**STEP 5** Determine the left from the right Wolo Horn. Right side shown in PIC 3. When mounted the Horn mouth will angle slightly downward and the wire connection spades will be facing upward. The horns will mount to the inside of the bracket the same way the OEM horns did. PIC 3 Attach the Wolo Horns to the OEM horn brackets using a hex nut and flat washer from the Wolo Horn hardware kit.



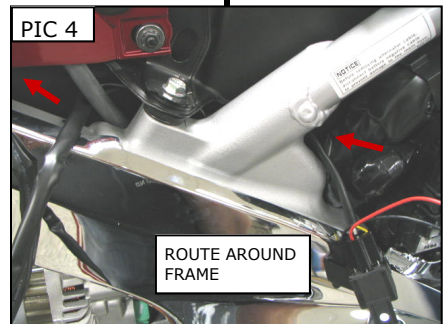
**STEP 6** Remove the left side panel and engine cover from the bike. Route the ring terminals on the Wolo Horn Wiring Harness to the battery, RED wire to positive and BLACK wire to negative. Install the included relay to the four pin connector on the wiring harness.

**NOTE:** Wrapping the joint between the relay and the relay plug with electrical tape will help keep water and debris out.



**NOTICE** Secure all wiring away from any moving parts, pinch points or extreme heat. Küryakyn WILL NOT issue a warranty on any electrical component that fails due to pinched, crimped, broken, abraded, melted or frayed wires.

**STEP 7** Route the wires behind the frame rail, PIC 4, over the left engine head, PIC 5 and PIC 6, and over the engine guard to the horn mount. PIC 7 You will be able to tuck the relay in under the frame rail. PIC 8



**NOTICE** Secure the relay in a location so the terminals face down and it is protected from the elements (road grime, rain, or washing the bike).

**STEP 8** Secure the wiring harness with the provided cable ties. Be certain the wires are away from any pinch points or direct heat.

**NOTICE** Küryakyn recommends the use of dielectric grease on electrical connections.

**STEP 9** Connect the YELLOW wire from the new Wolo Horn Harness to the LIGHT GREEN wire on the OEM horn wiring harness. PIC 9

**STEP 10** Connect the remaining WHITE wire from the Wolo Horn Wiring Harness to the rear male spade from the Wolo Horn. The DARK GREEN wire from the OEM harness connects to the front spade on the Horn. PIC 10

**STEP 11** Connect the ring terminals routed in Step 6 and the battery cables, if disconnected, to the battery. The RED wire from the Wolo Horn harness to positive and the BLACK to negative.

**STEP 12** With the relay harness in place, turn the key to check the horn function with the OEM handlebar mounted horn button. If you do not have horn function, review all connections.

**STEP 13** Replace the engine cover, side panel and cowl.

**NOTICE** It is the installer's responsibility to ensure that all of the fasteners (including pre-assembled) are tightened before operation of the motorcycle. Küryakyn will not issue a warranty on components lost due to improper installation. Periodic maintenance may be required.

