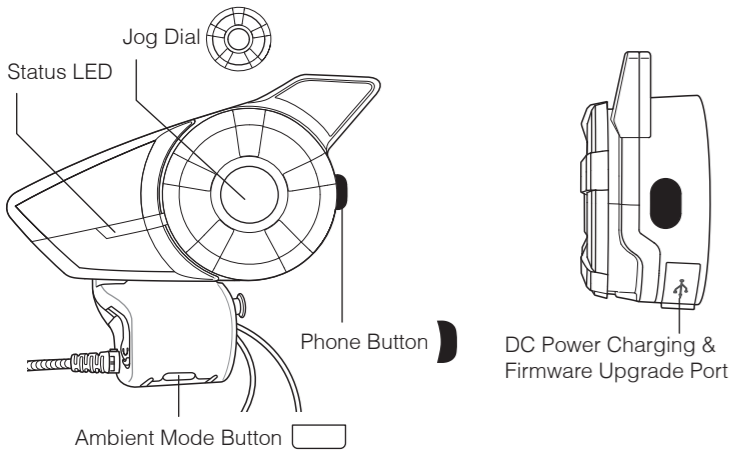
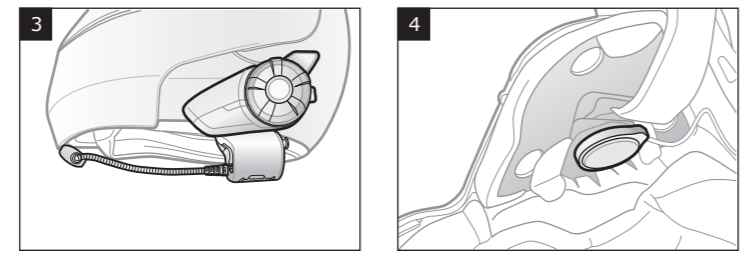
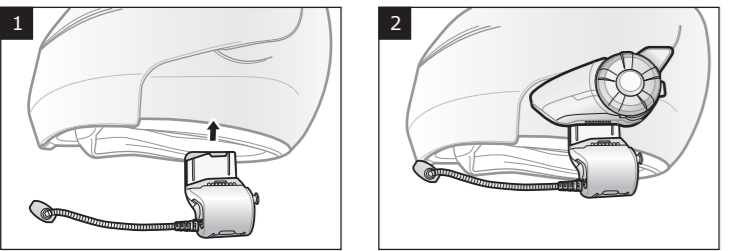


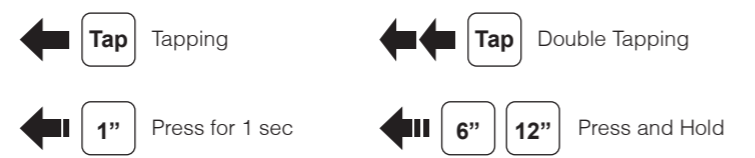
20S EVO Quick Start Guide



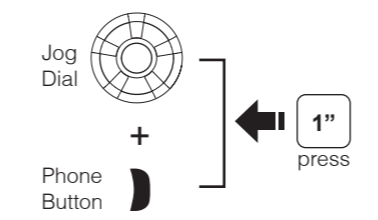
Installation



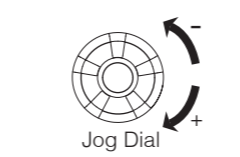
Button Operation



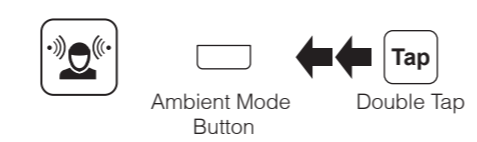
Power On/Off



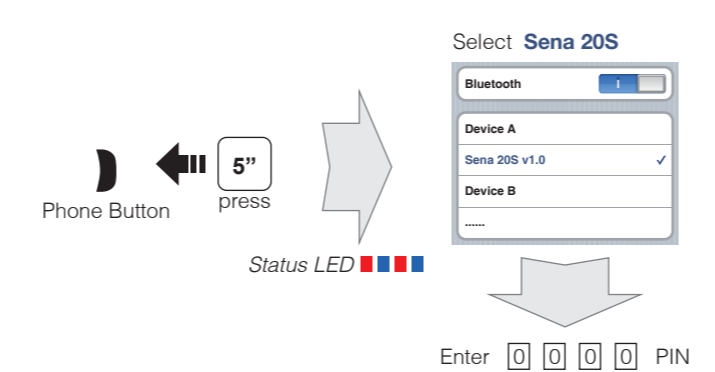
Volume Adjustment



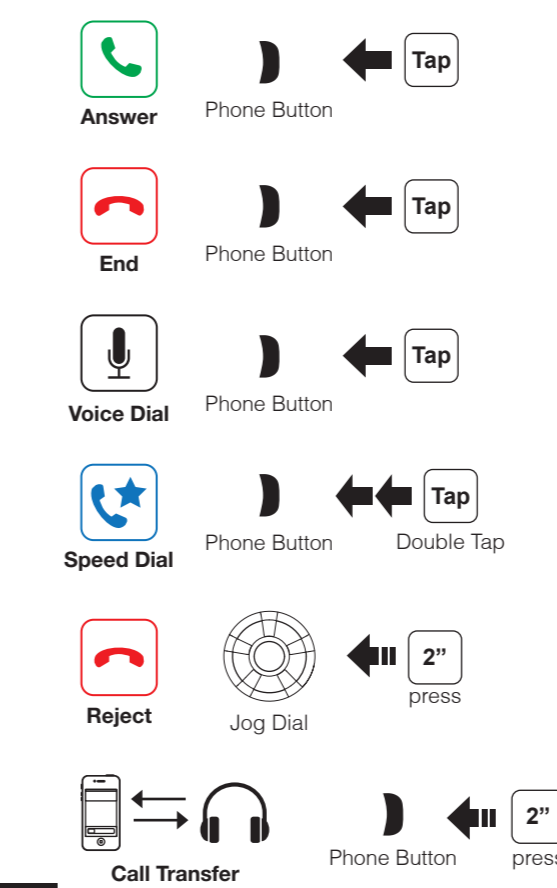
Ambient Mode



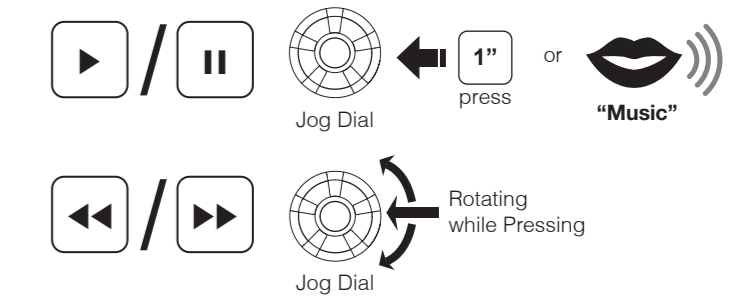
Bluetooth Pairing Phone, MP3 and GPS



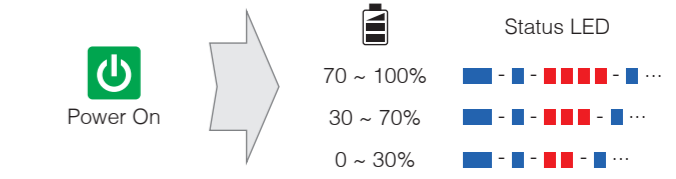
Mobile Phone



Music



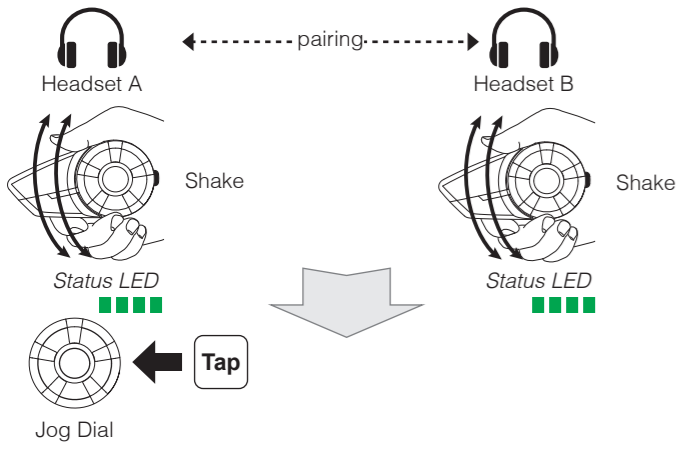
Battery Check



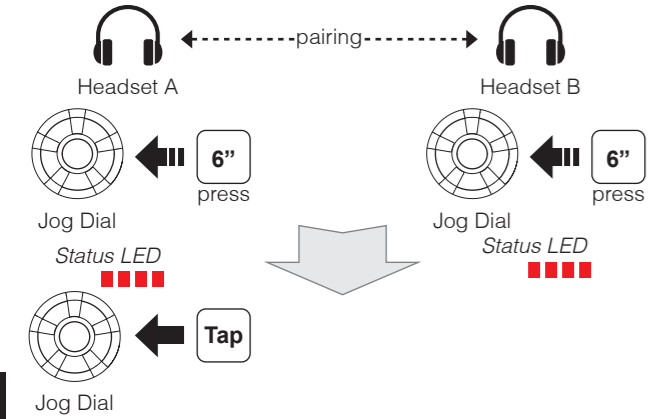
Configuration Menu



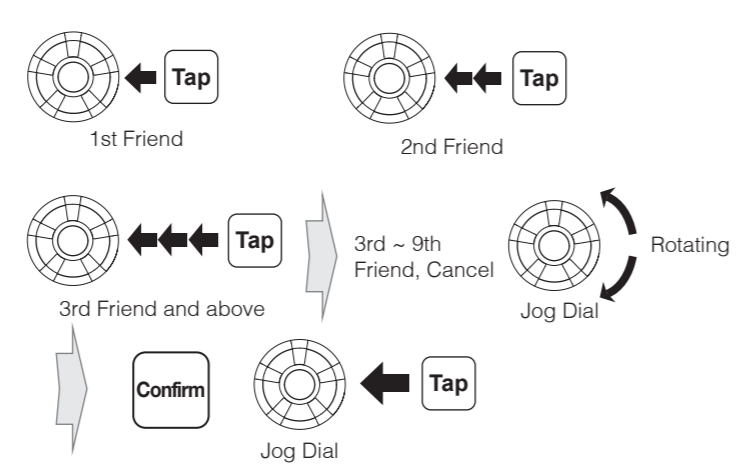
Quick Pairing Intercom



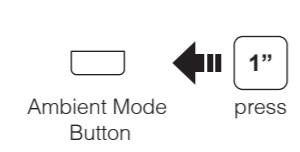
Normal Pairing Intercom



Start / End Intercom



Start / End Group Intercom



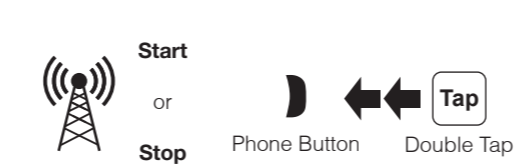
Radio On / Off



Radio Seek Stations



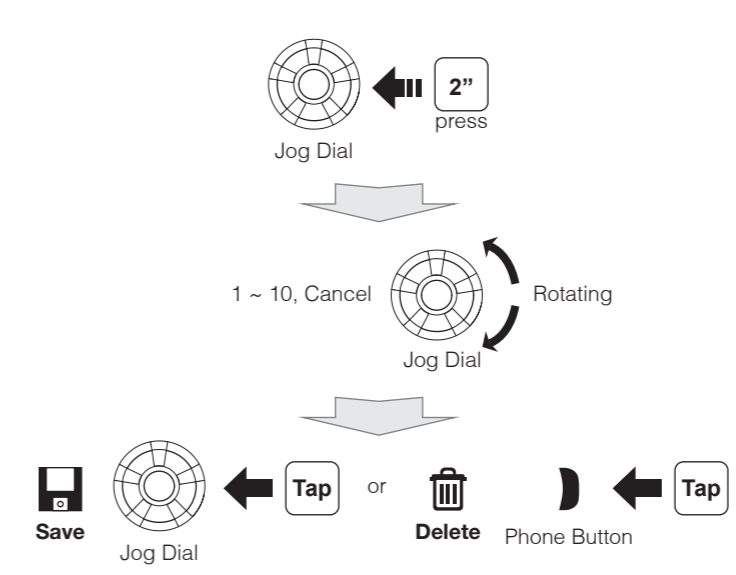
Radio Scan Up FM Band



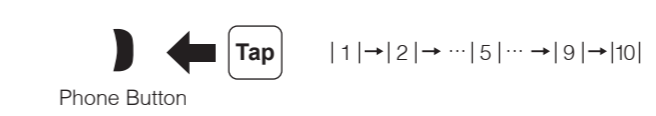
Save to preset while scanning



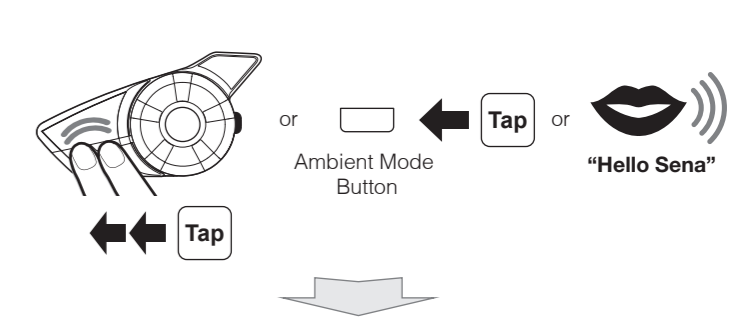
Radio Save or Delete Preset



Radio Move to Preset Station



Voice Command



Voice Command	Function
"Music"	Music play/pause
"FM radio"	FM Radio on/off
"Intercom [one, two, ... , nine]"	Start/End each intercom
"Speed dial [one, two, three]"	Speed dialing

A full version of the manual is downloadable at www.sena.com.



Sena Technologies, Inc.
www.sena.com
 Customer Support: support.sena.com
 E-mail: support@sena.com