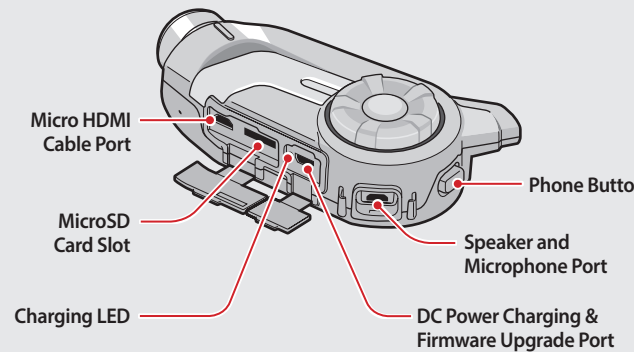
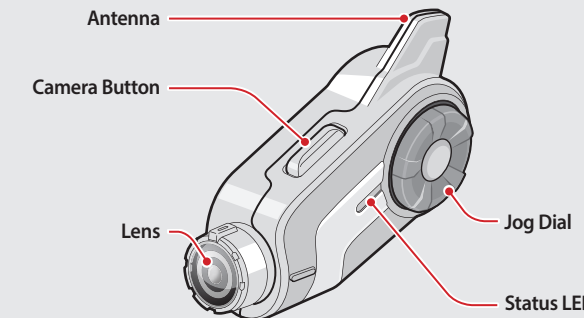
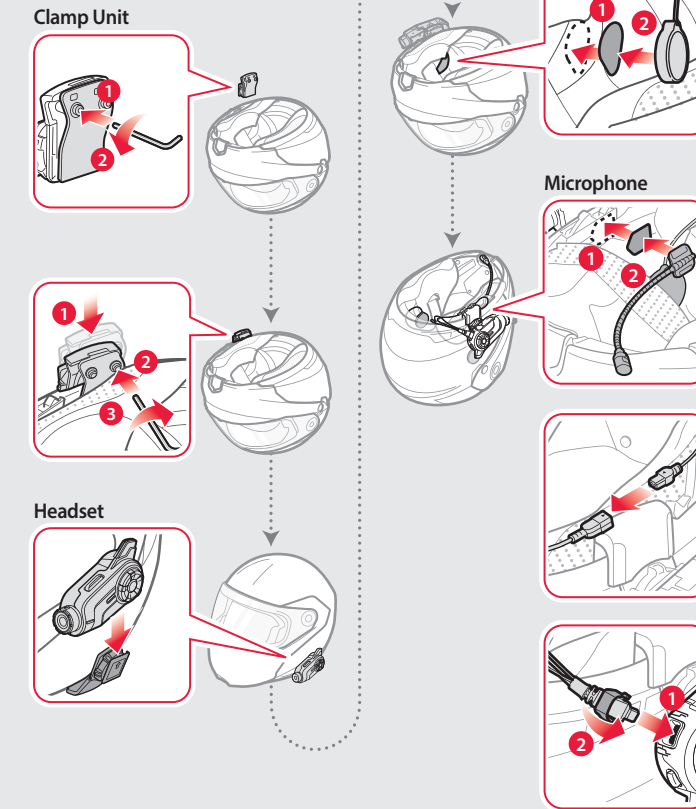


PREPARATION

Knowing the Headset Layout

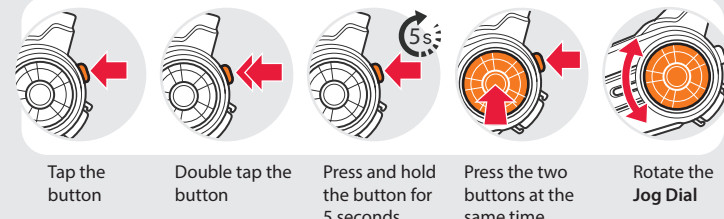


Installing the Headset

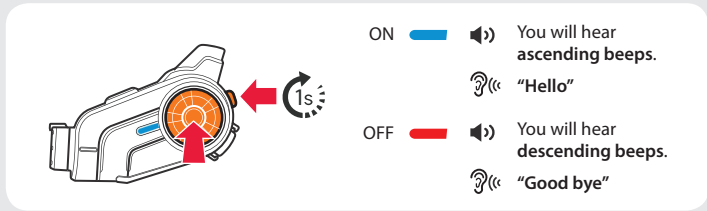


BASIC OPERATION

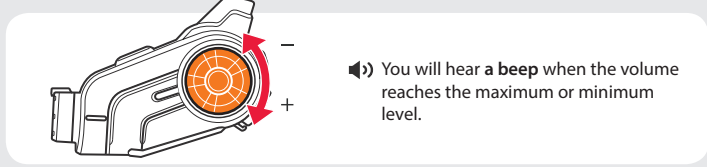
Operating the Buttons



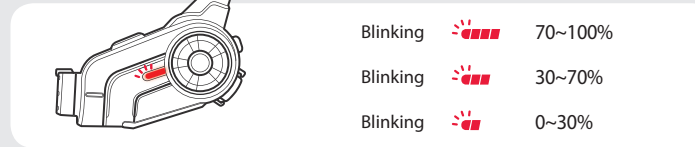
Turning On/Off the Headset



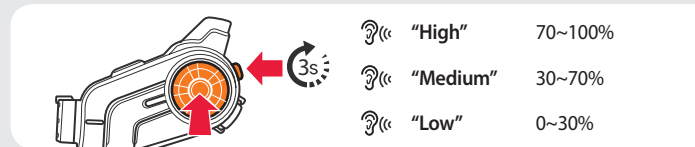
Adjusting the Volume



Checking the Battery Level

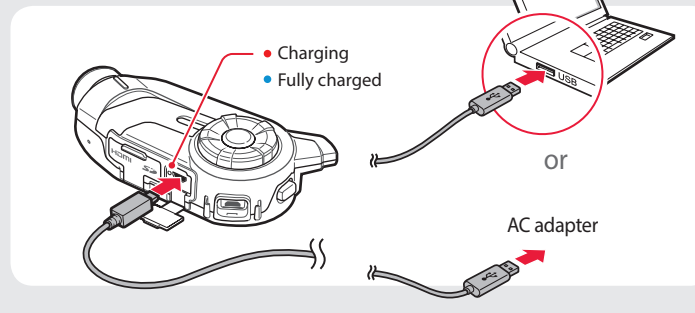


Turn on the headset and check the battery level via the Status LED.



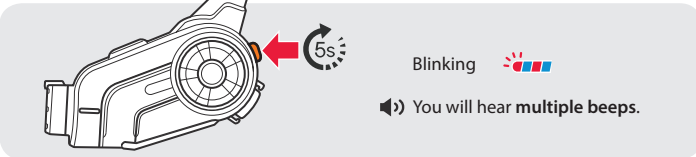
Or, press and hold the Jog Dial and the Phone Button for 3 more seconds when the headset turns on. You will hear a triple beep and a voice prompt.

Charging the Battery

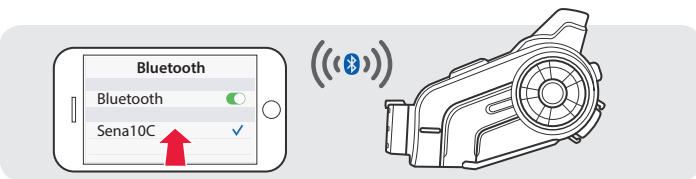


PAIRING

Pairing with Mobile Devices - Phone, Music



"Phone pairing"

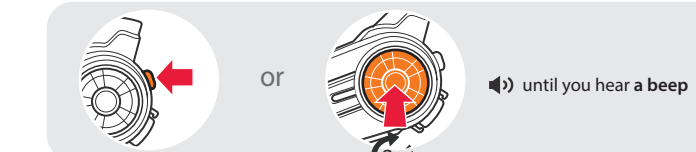


Using Phone Features

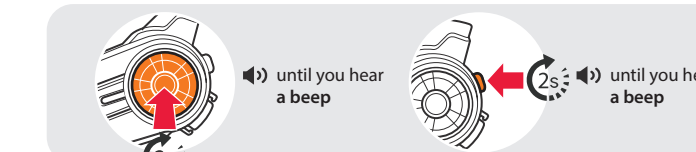
After Pairing...
Answering Calls



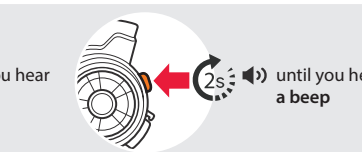
Ending Calls



Rejecting Calls



Transferring Calls between a mobile phone and the headset



Making Calls

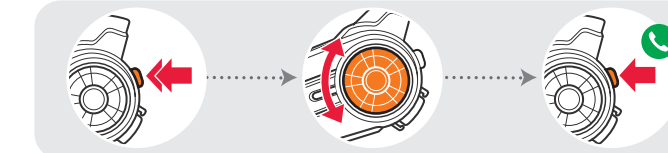
Using the Phone Keypad



Using the Voice Dialer



Using the Speed Dial



You will hear a beep.

"Speed dial"

- Voice Menu**
- Last number redial
 - Speed dial 1
 - Speed dial 2
 - Speed dial 3
 - Cancel

Listening to Music

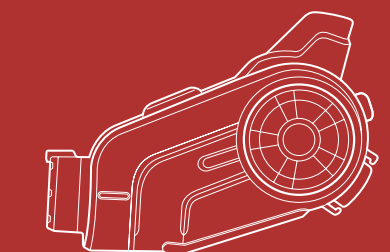
After Pairing...

Playing or Pausing Music



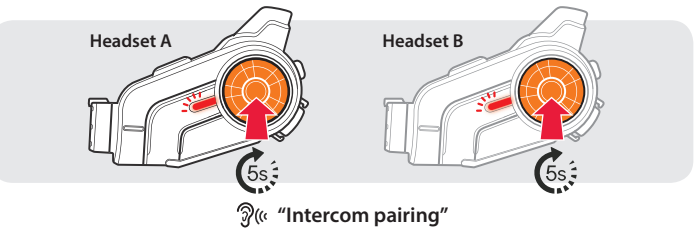
Tracking Forward or Backward



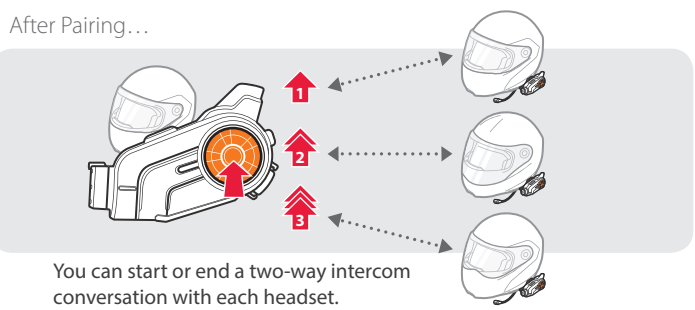


INTERCOM

Pairing with Other Headsets

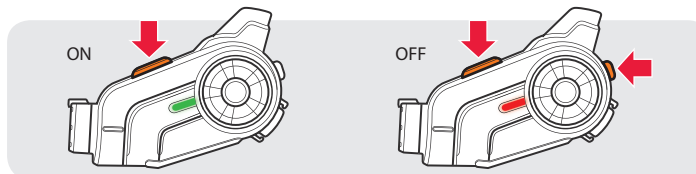


Using the Intercom

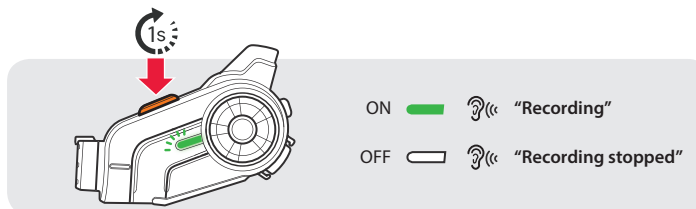


CAMERA

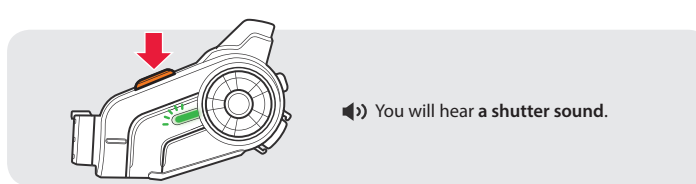
Turning On/Off the Camera



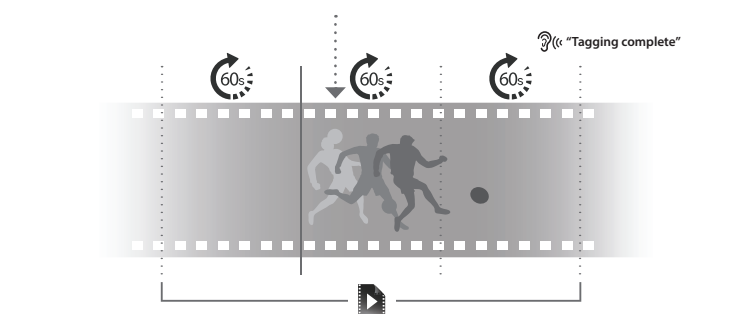
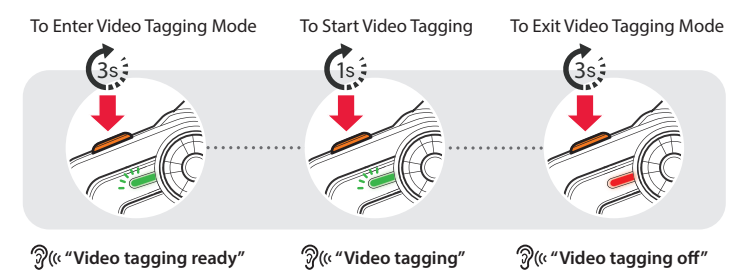
Recording Videos



Taking Photos



Tagging Videos

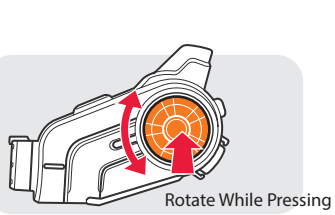


RADIO

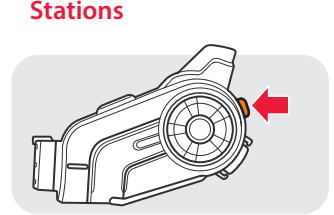
Turning On/Off the FM Radio



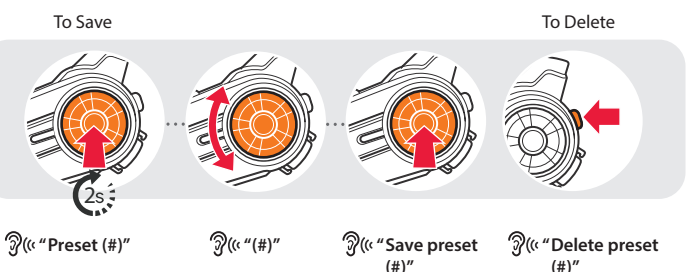
Seeking Stations



Listening to Preset Stations

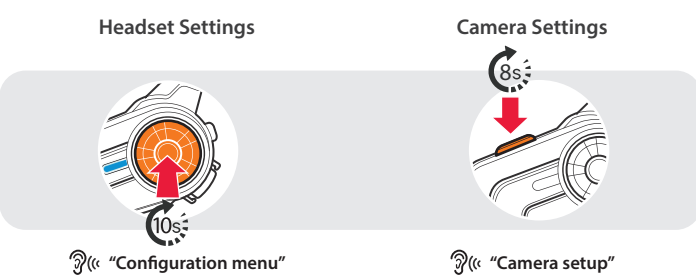


Saving or Deleting Stations



SETTING

Method1) Using the headset



Method2) Using the Sena Device Manager

Connect the headset to your computer via a USB cable. Launch the Sena Device Manager and click **DEVICE SETTING** to configure the headset settings.

For details about downloading the Sena Device Manager, refer to the leaflet included in the package.

Method3) Using the Sena Smartphone App

1. On your smartphone, download the Sena Smartphone App for Android or iPhone from Google Play or App Store. Refer to www.sena.com for more details.
2. Pair your smartphone with the headset.
3. Run the Sena Smartphone App. Swipe the screen to the right and tap **Setting** to configure the headset settings.

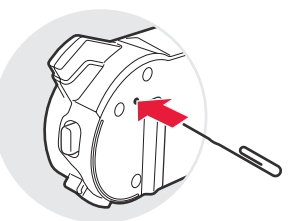
TROUBLESHOOTING

Factory Reset

If you want to restore the 10C to factory default settings, press and hold the **Phone Button** for 10 seconds. Tap the **Jog Dial**. The headset automatically restores the default settings and turns off.

Fault Reset

If the 10C is not working properly for any reason, push the pin-hole reset button located on the back of the headset.



Sena Technologies, Inc.
www.sena.com
 Customer Support: support.sena.com

You can download the full version of the manual and view other Sena products at the Sena website: www.sena.com.